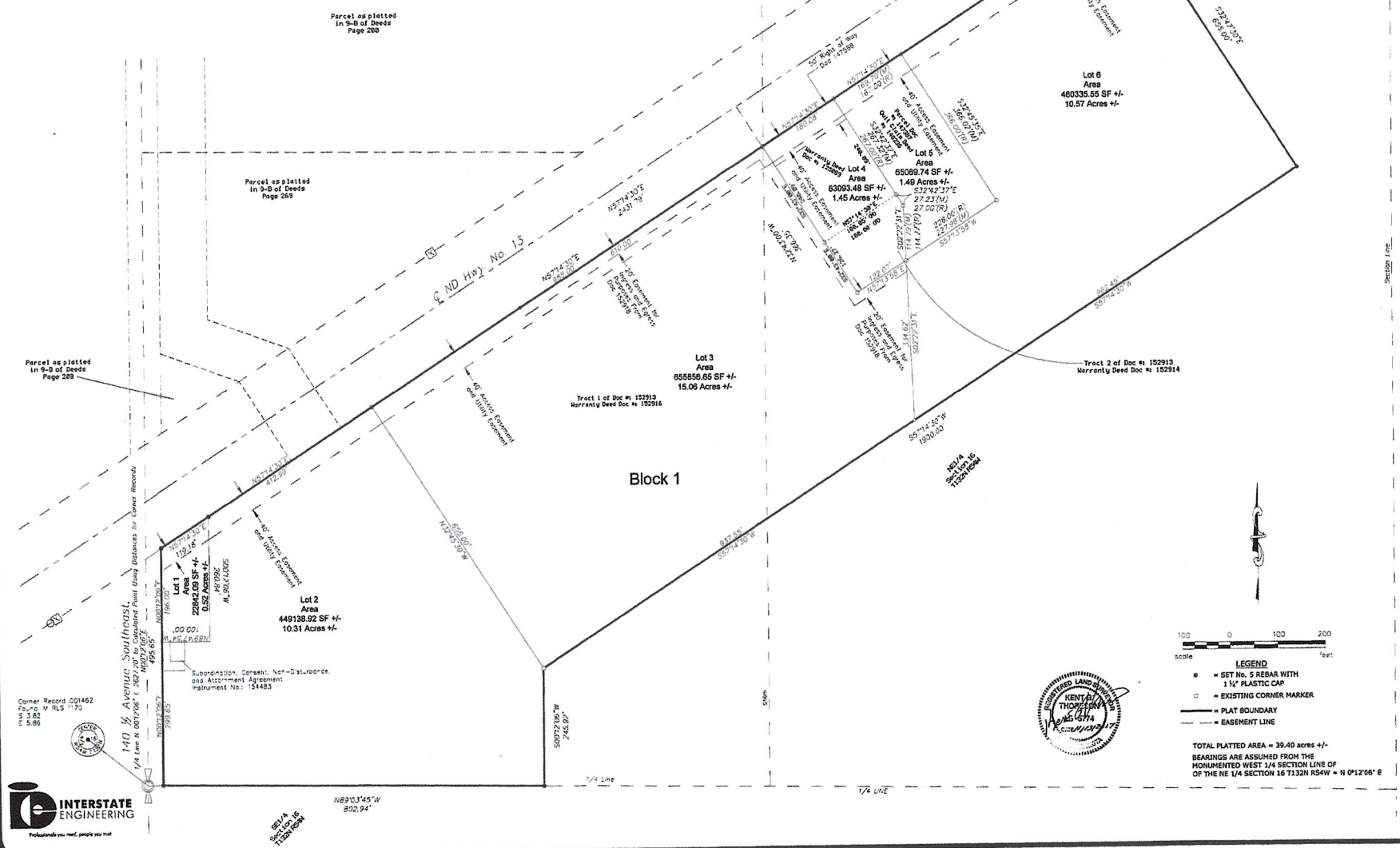


Ruby Industrial Addition

PART OF THE NORTHEAST 1/4 SECTION 16, TOWNSHIP
132 NORTH, RANGE 54 WEST, 5th P.M. TO THE CITY OF
MILNOR, SARGENT COUNTY, NORTH DAKOTA



- LEGEND**
- = SET No. 5 REBAR WITH 1 1/2" PLASTIC CAP
 - = EXISTING CORNER MARKER
 - = PLAT BOUNDARY
 - - - = EASEMENT LINE

TOTAL PLATTED AREA = 39.40 acres +/-
BEARINGS ARE ASSUMED FROM THE MONUMENTED WEST 1/4 SECTION LINE OF THE NE 1/4 SECTION 16 T.32N R.54W = N 0°12'06" E



Corner Record 001462
Range W T.32 N. 172
Twp 132 N. R. 54 W. 5th P.M.

140 1/2 Avenue Southroads,
1/4 Line N. 0°12'06" E. 282.70' to
1/4 Line S. 89°55' 45" W. 455.85'

Subdivision, Cession, Non-Disturbance
and Assignment Agreement
Instrument No: 154483

